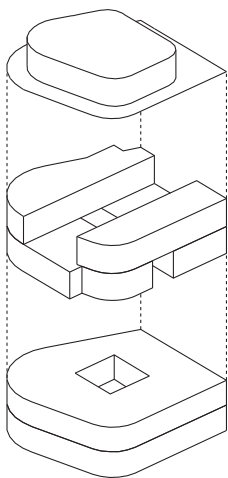




© Stefan Müller-Naumann

brief
private residence with
publishing company spaces

client
private



K House is part of an 18th century ensemble of villas, much modified over the years, that borders the English Garden in the centre of Munich. The house contains a generous two storey apartment for its owners and their large collection of modern and contemporary art, a penthouse pied-à-terre, as well as areas for office use on the ground and first floor. While each storey has its own particular floor plan, all are essentially derived from that of a classical villa. As a result the K House contains very different spaces for working, living, exhibiting and entertaining that are layered upon one another within a cohesive form.

These variations on a theme contained in the floor plans are also visible on the elevations: the symmetrically planned, classical logic of the street façade reveals, on second glance, subtle modulations in character, and the idiosyncrasies of the manifold interior spatial situations are clearly recognisable in the sculptural composition of both side and rear elevations.

A coloured outer skin of partially glazed brickwork gives a certain unity to the whole, but from a distance the building is clearly differentiated into two – lighter in tone above and darker below. Seen close by, however, each zone dissolves into a multi-coloured surface of indeterminate spatiality and materiality. The freely composed play of colour over a virtually endless number of similar and repeating bricks supports the surprising synchronicity of formal rigour and playful ease.

